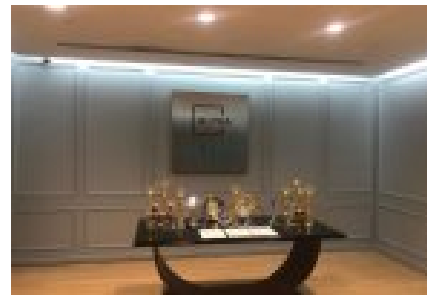
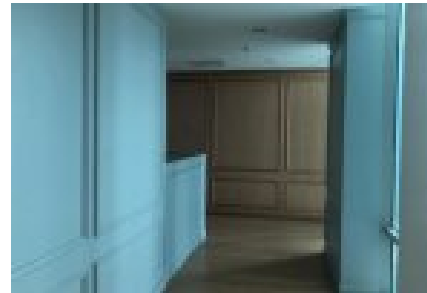


Commercial for rent in Jalan Sungai Besi, Kuala Lumpur



Key
features **2302.90 m²**
Usable area

Listing provided by:

Tel: +60122248866

We focus on Commercial Space (Office and Retail Leasing) and our areas include KLCC, CBD, KL City, PJ and other parts of Klang Valley. Feel free to contact Tiffany (REN 09427) @ +6012 224 8866 (Whassap) or tiffany.tang@corporateoffice.my for inquiries and office space proposals OFFICE FOR RENT (FULLY...

View online:



7
photos



100,000 RM
/ month